

Volet Recherche

Eric Quirico

Sandrine Anquetin et Céline Lutoff

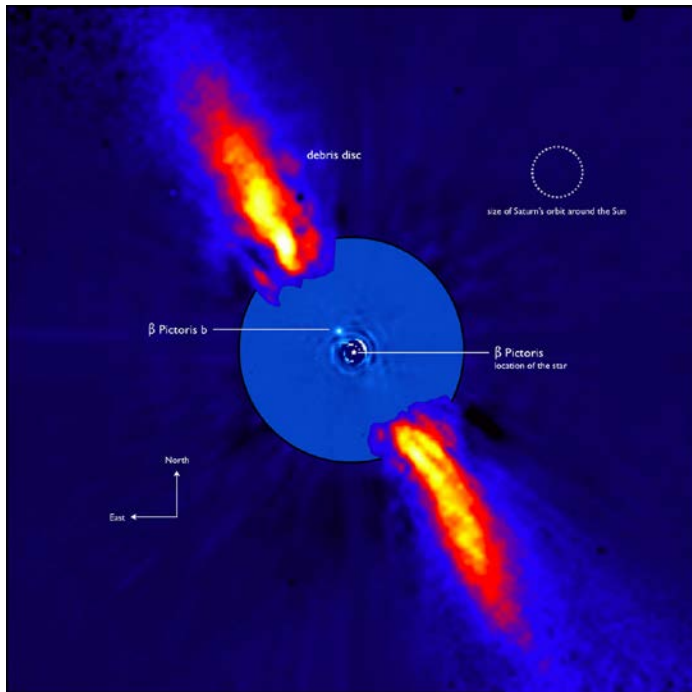
David Mouillet

Nadège Meunier et Philippe Gueguen

Kick-off meeting - 10/10/2011



(A) Univers lointain



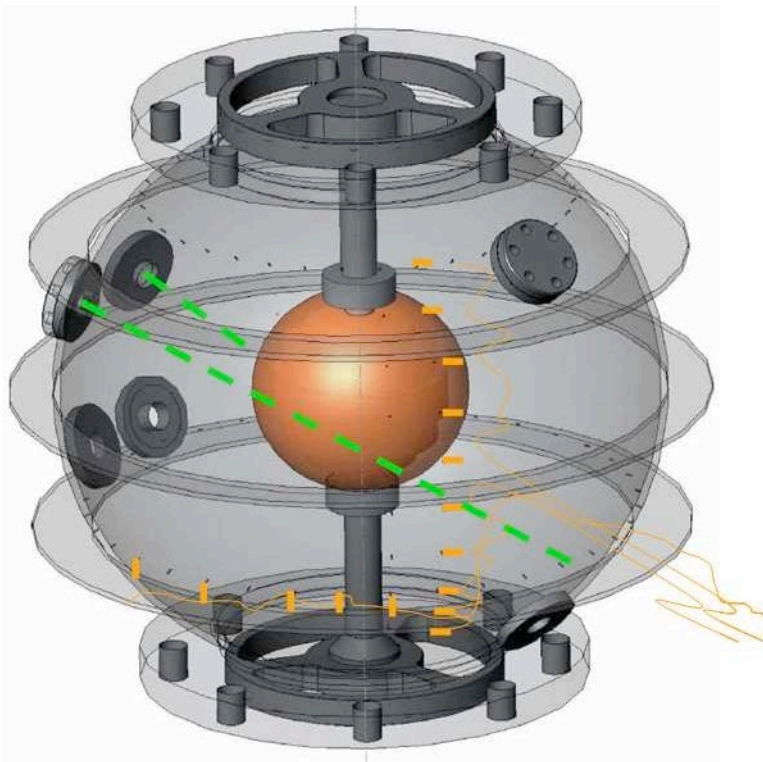
ESO: AM Lagrange et al.



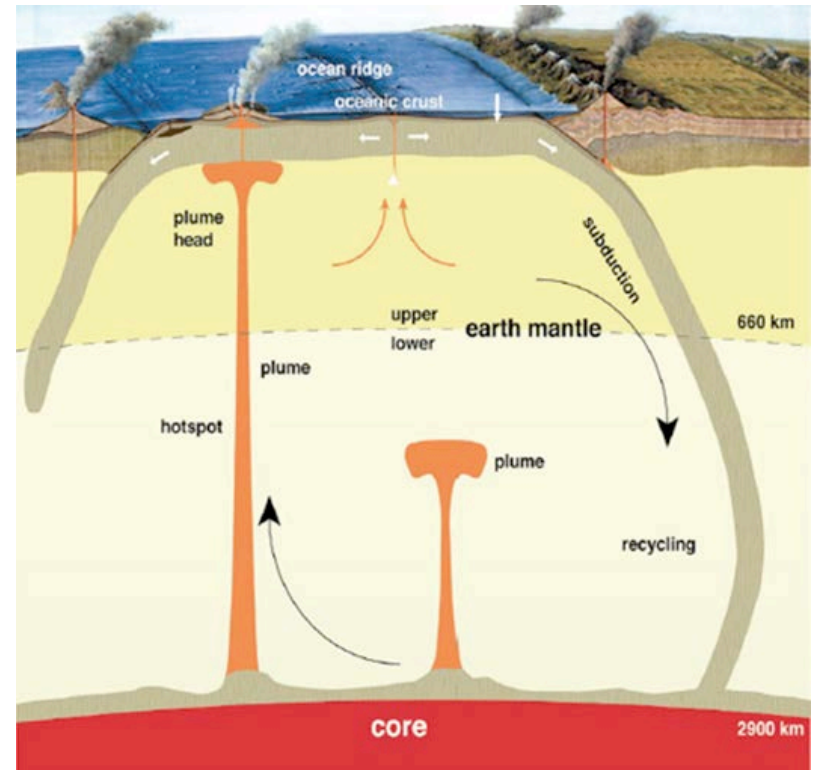
ESA/DLR/FU Berlin (G. Neukum)

ESA: Mission Mars-Express

(B) Terre interne



Expérience DTS (ISTerre)

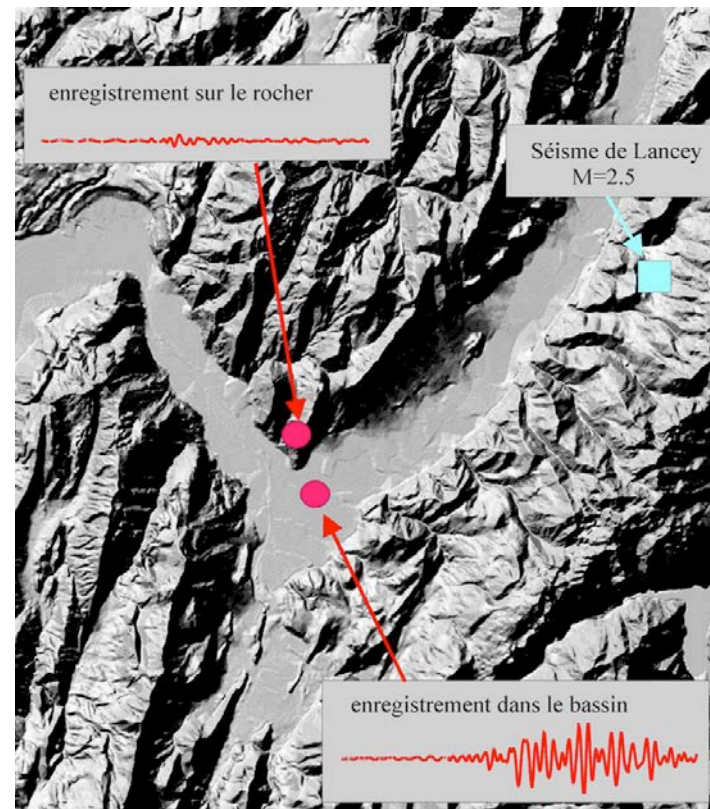


A. Sobolev (ISTerre)

(B) Sismique, Risque



Crédit: Sismalp



(B) Processus de surface

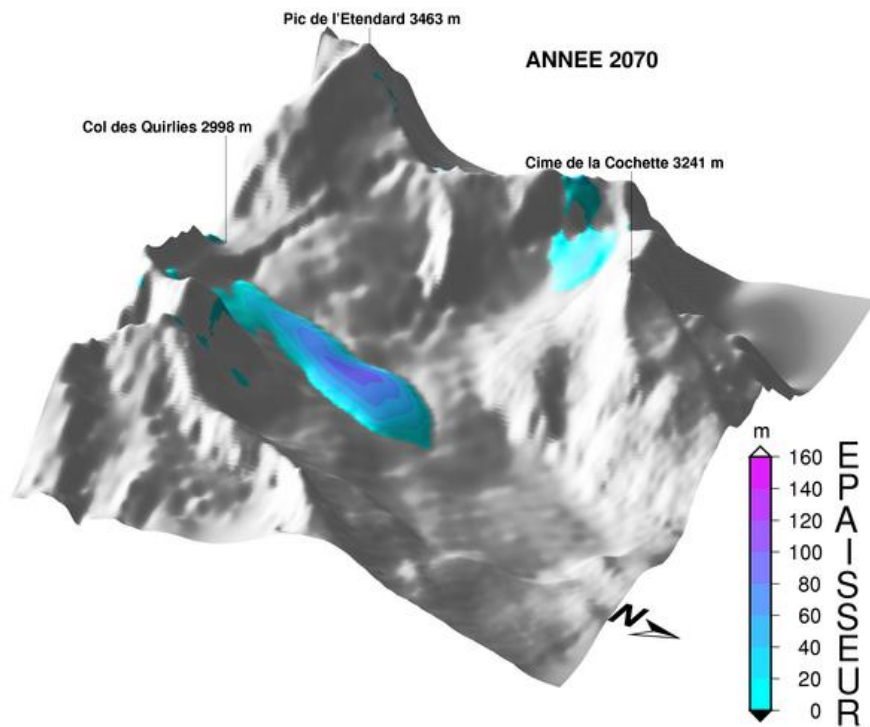


Crédit: LTHE

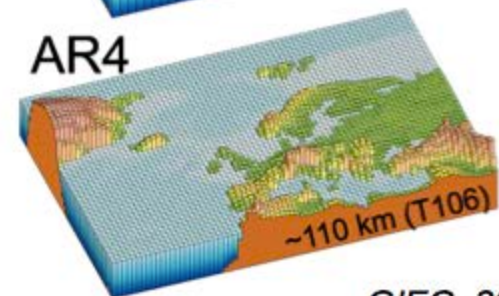
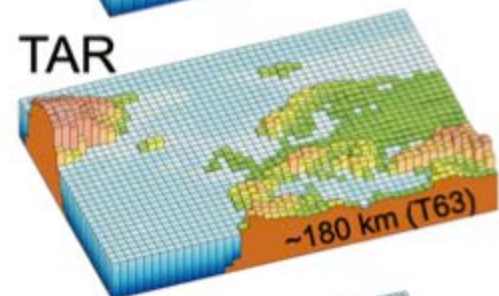
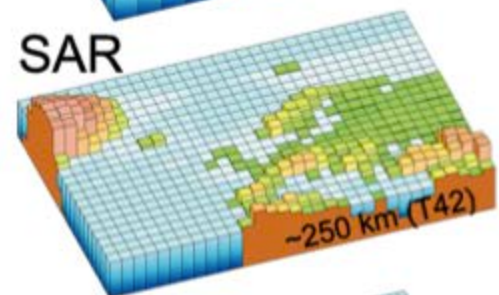
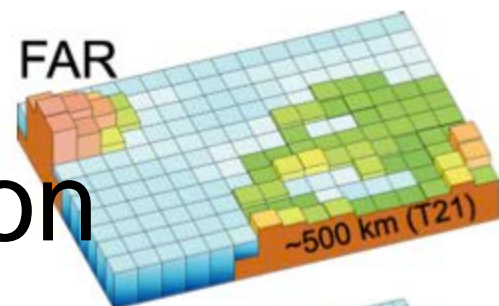


Crédit: Valla/Van der beek (ISTerre)

(C) Climat: modélisation



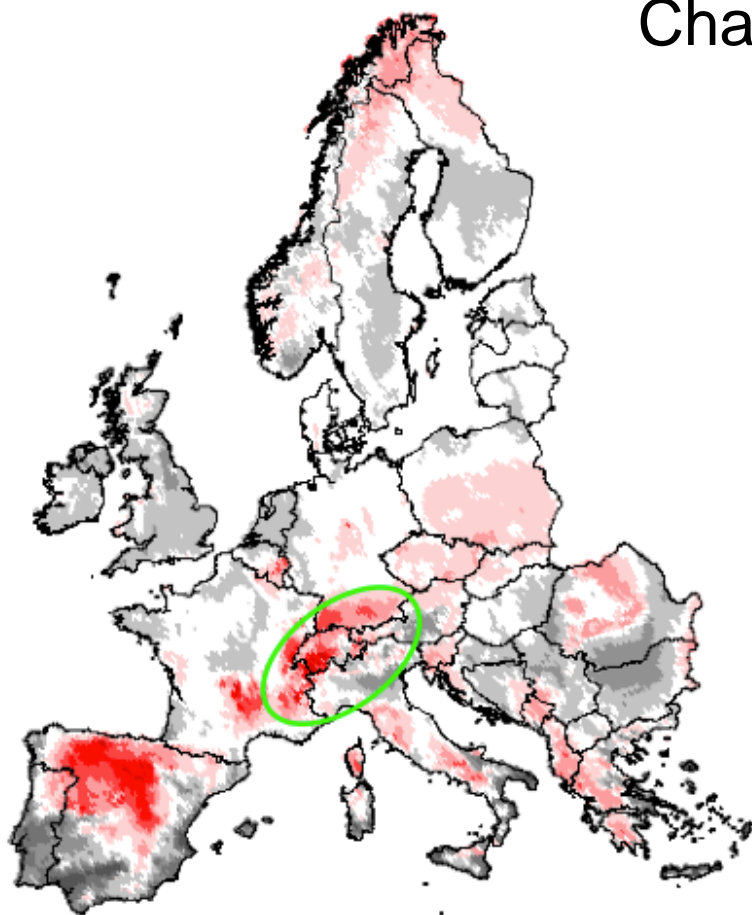
Glacier St Sorlin 3400 m – hypothèse +3 ° C
Crédit: E. Le meur (LGGE)



GIEC, 2007

(C) Climat: réponse écosystèmes

Changements majeurs dans les pré-Alpes



Station Alpine UJF (UMS 3370)

(C) Environnement: pollution air, eau, sol



Programme PIMPUS: teneur en NO₂
des axes routiers de Grenoble



	Observer	Archiver	Modéliser	Prévoir Conseiller
Astrophysique	W P- R1	WP-R2		WP-R3
Terre interne				
Terre externe				
Climat				
Environnement				
Risques				

Fondamental-Finalisé-Appliqué-Sociétal

OBSERVING WITH NOVEL INSTRUMENTATION (WP-R1)

- A1. *Inventing instruments for extremely large telescopes and space probes*
- A2. Creating and using new tools for probing matter
- A3. Shaping future observing networks for climate and biodiversity
- A4. Shaping future observing networks for monitoring the solid earth

Intertwining data and models (WP-R2)

- B1. *Inventing and applying novel seismic imaging techniques*
- B2. *Developing new data exploration strategies*
- B3. Modelling geophysical and astrophysical flows
- B4. Constructing integrated climate and earth system models

PREDICTING AND ADVISING (WP-R3)

- C1. Nowcasting and forecasting space weather
- C2. *Coupling novel risk assesment strategies to social vulnerability*
- C3. Preventing hazards in changing mountain environments
- C4. Developing multidisciplinary approaches of environmental health issues

WP-R3 Prédire et Conseiller

Risques hydrométéorologiques (S. Anquetin et C. Lutoff)

WP-R1 Instrumentation innovante

Instrumentation Astrophysique (D. Mouillet)

WP-R2: Couplage Observations - Modélisation

Centre de données – Sismologie (N. Meunier et P. Gueguen)